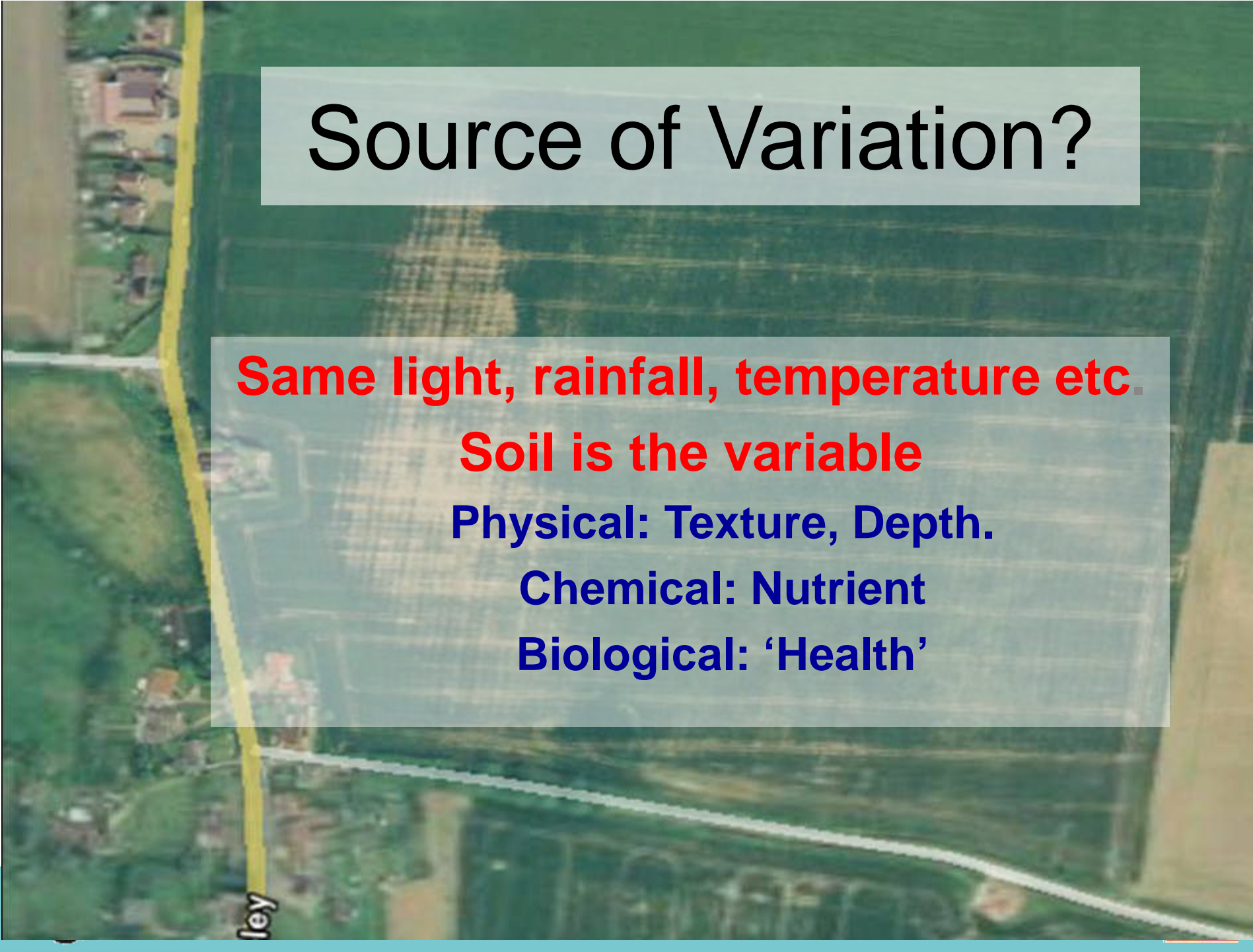




Precision agronomy service from **Agrii**.

STUART ALEXANDER – Precision Agronomy Manager

An aerial photograph of a rural landscape. A yellow road runs vertically on the left side. The landscape is a mix of green fields and some buildings. A semi-transparent grey box is overlaid on the right side of the image, containing text.

Source of Variation?

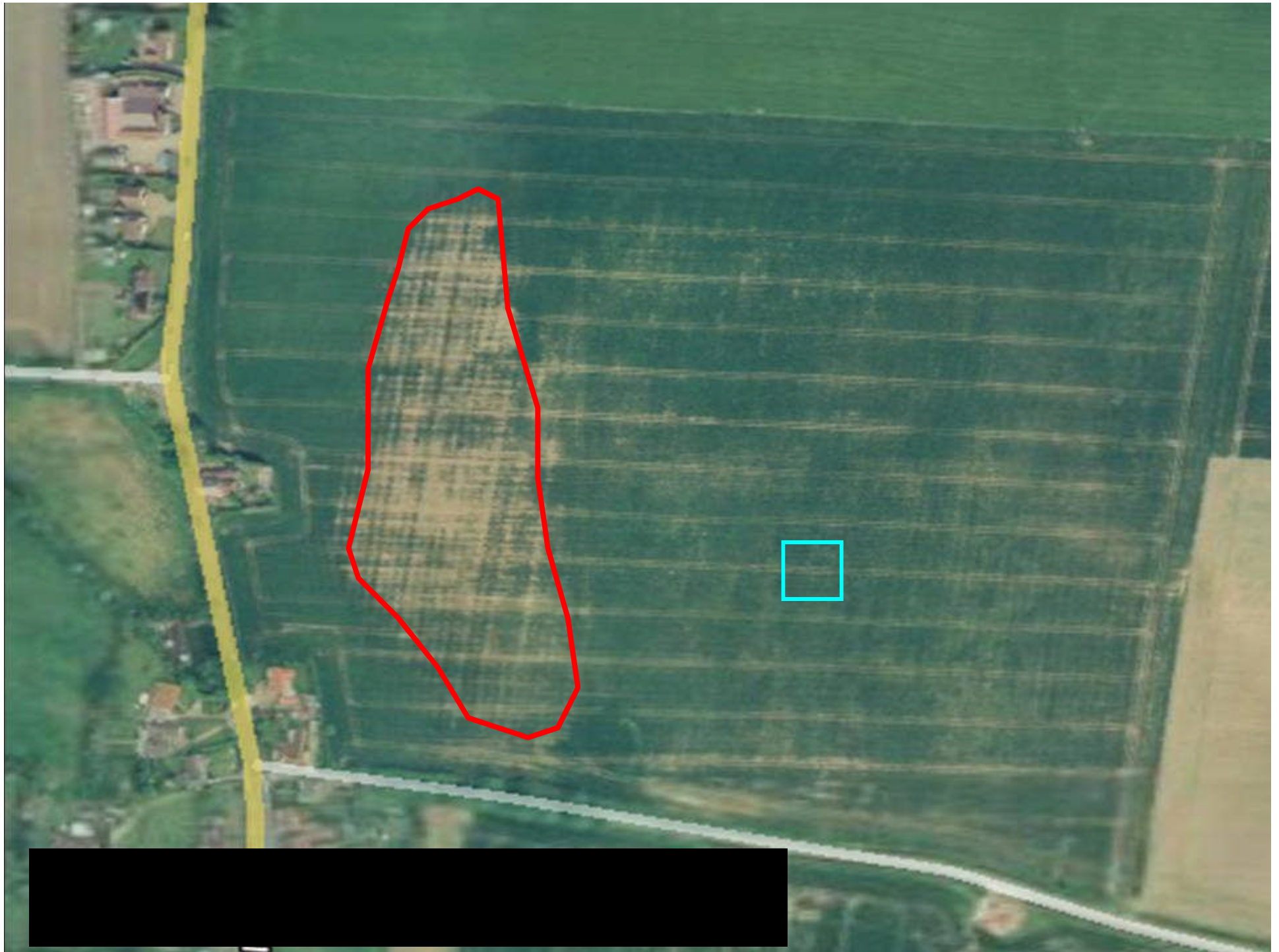
Same light, rainfall, temperature etc.

Soil is the variable

Physical: Texture, Depth.

Chemical: Nutrient

Biological: 'Health'



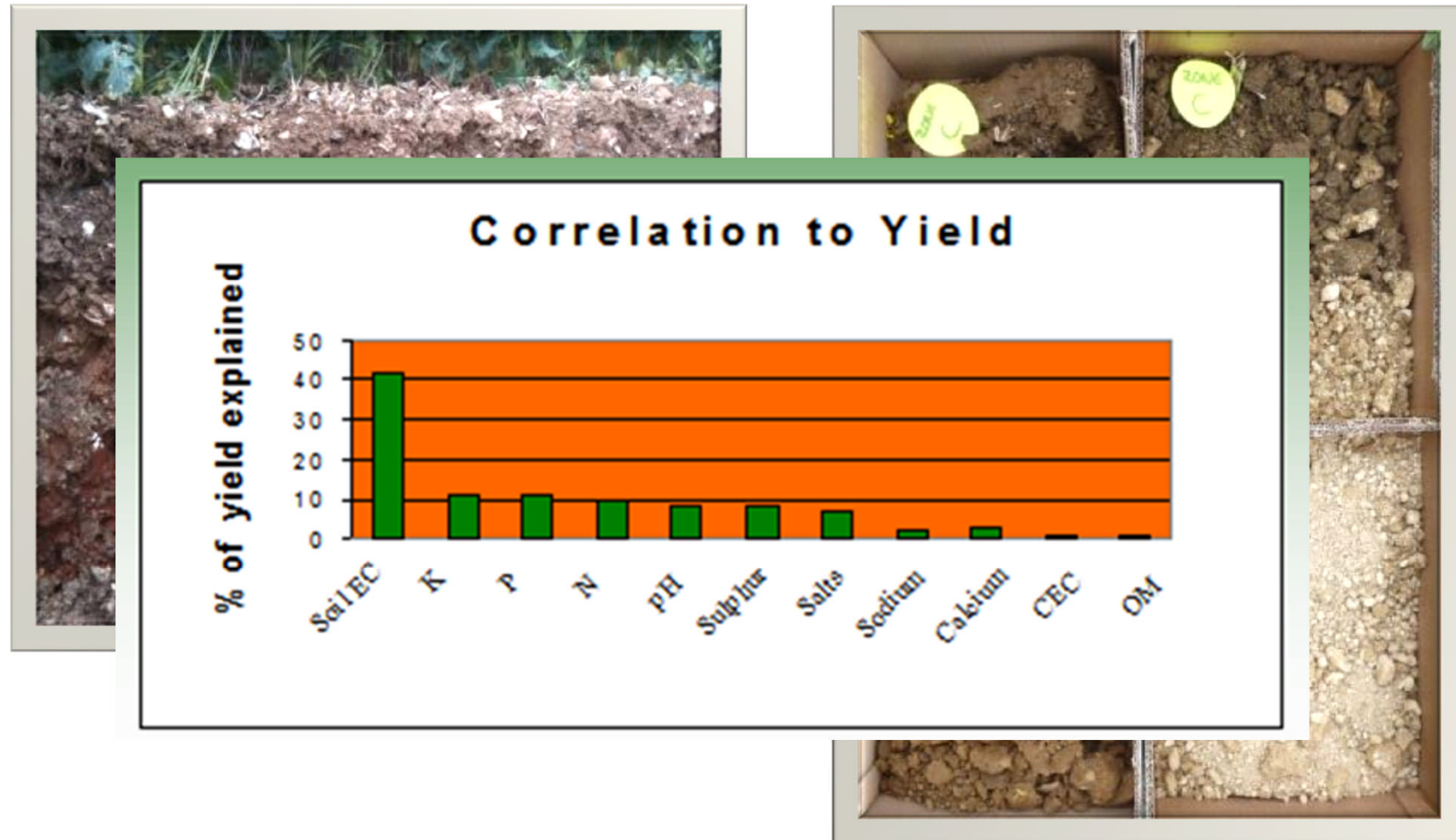
Where to start with Precision Agronomy



SoilQuest Veris Scanner



Where to start with Precision Agronomy



Agrii's SoilQuest Veris Scanner

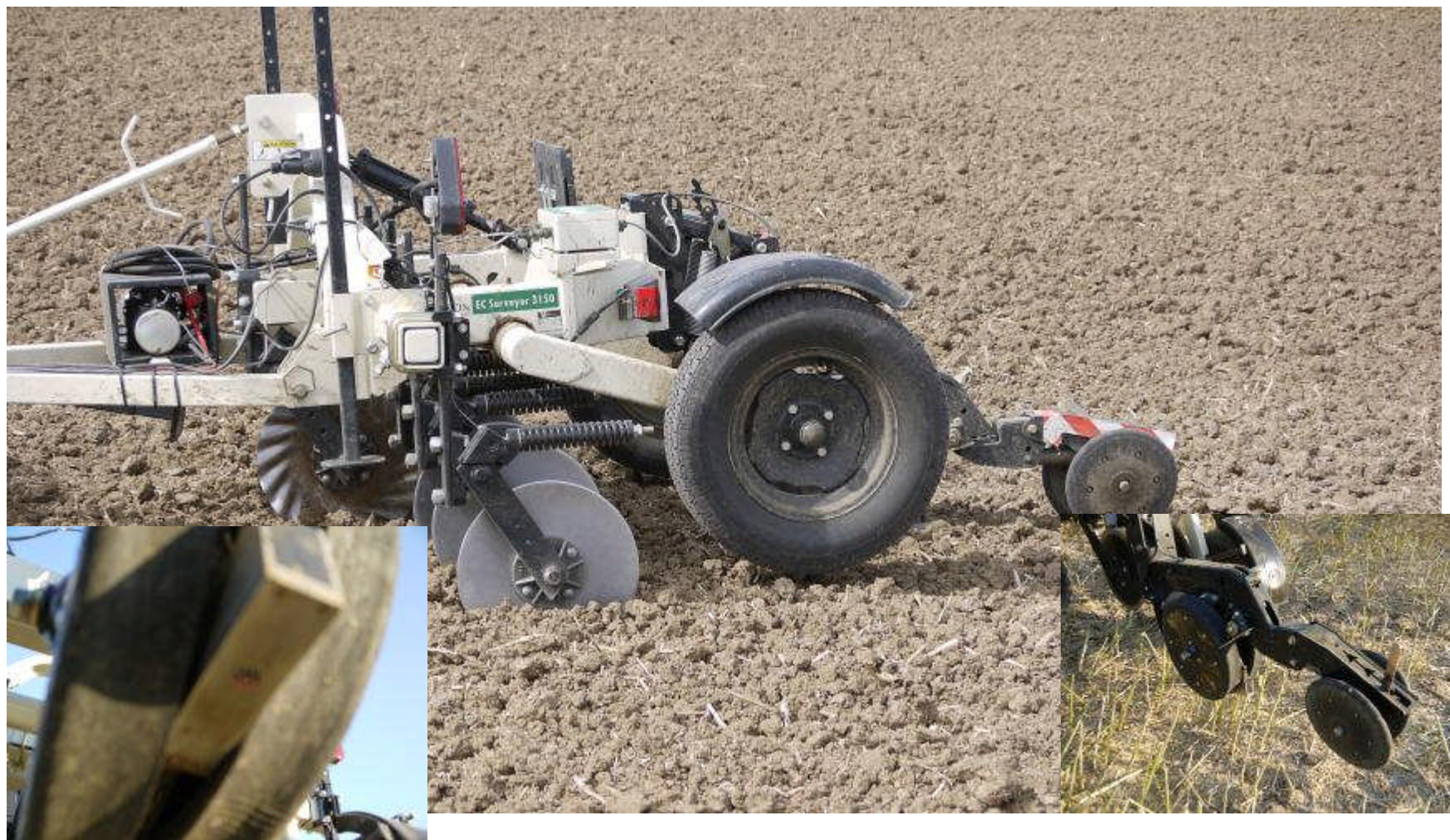


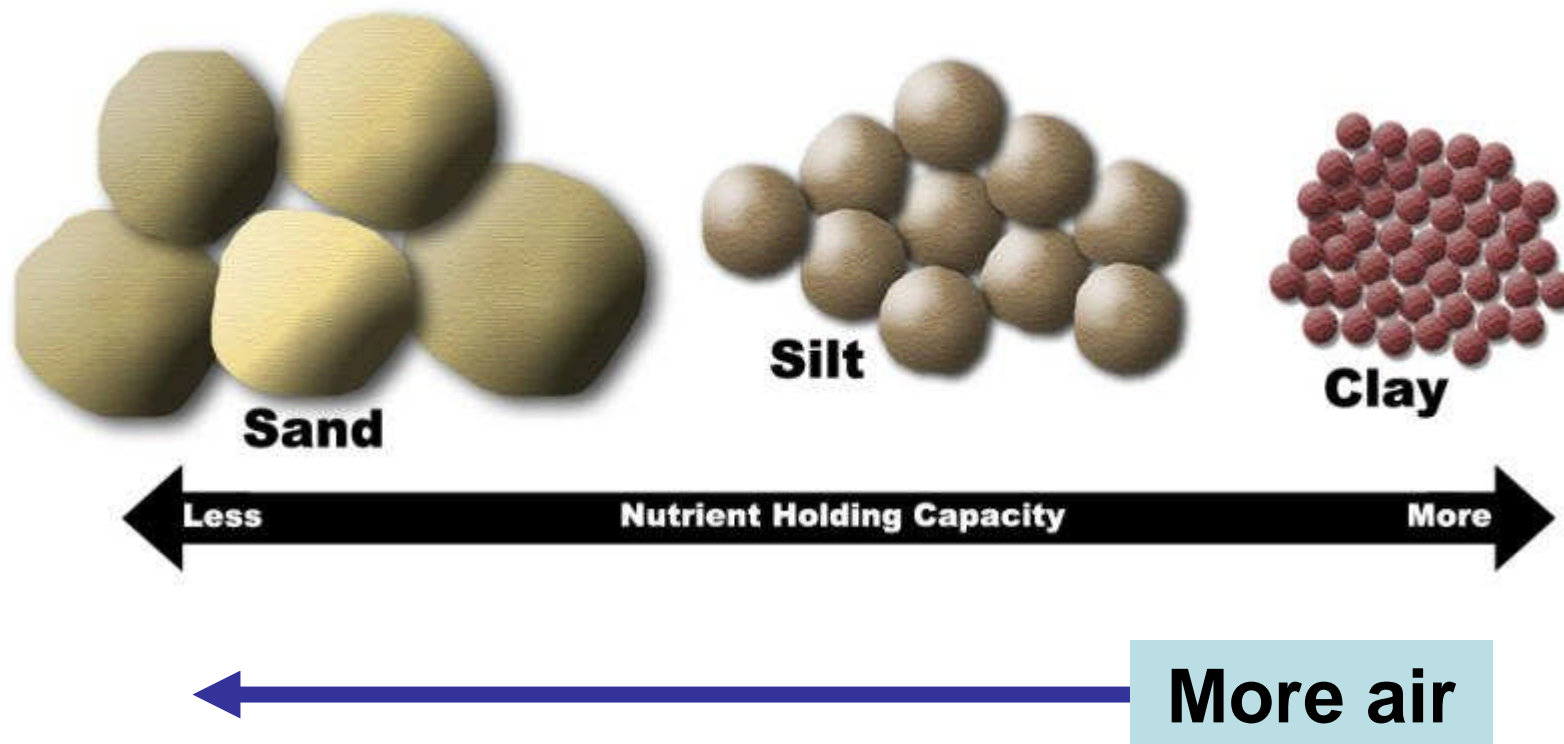
Agrii's SoilQuest Veris incrop Scanner





OM + EC



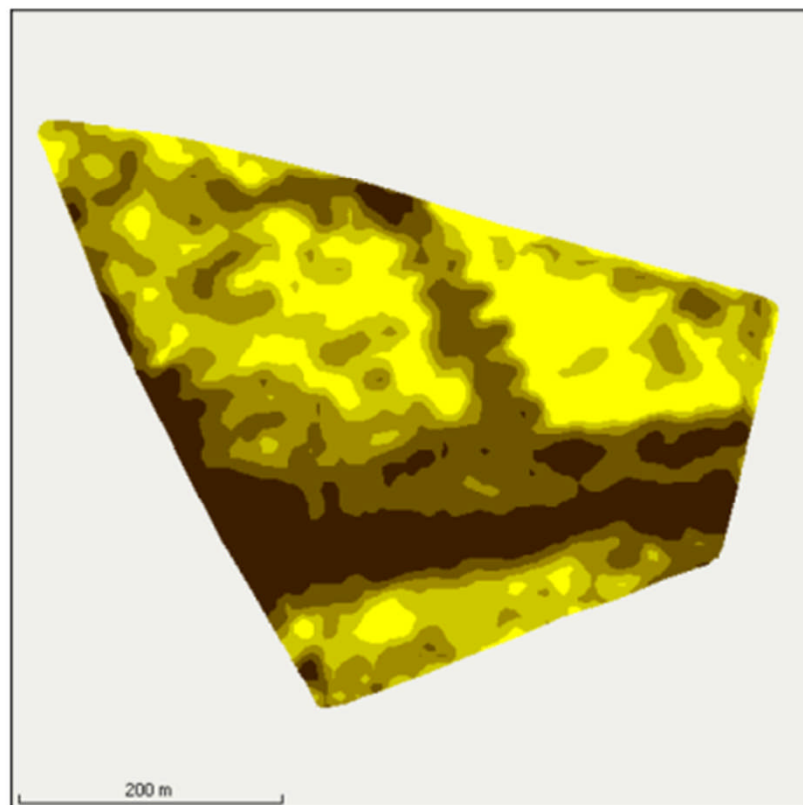


- Clay has a very large surface area in relation to its mass:–
 - 1 gram of sand = 1.5 – 2 sq cm
 - 1 gram of clay = several hundred sq cm

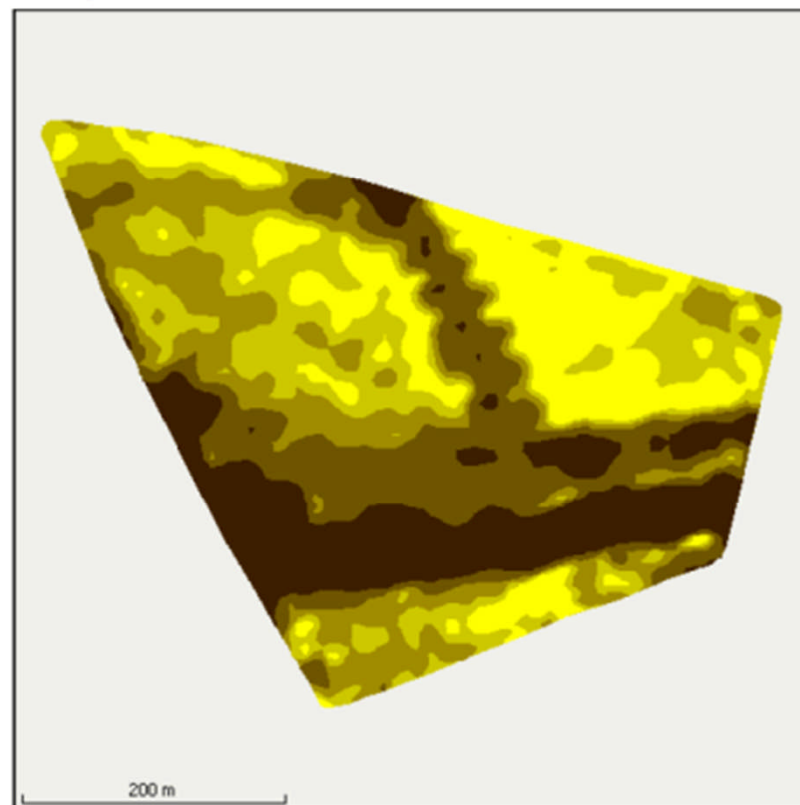
Soil Map & Zones

FIELD: Hanging Post (14.93ha)

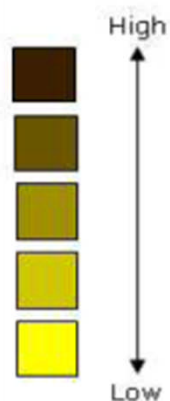
Shallow



Deep

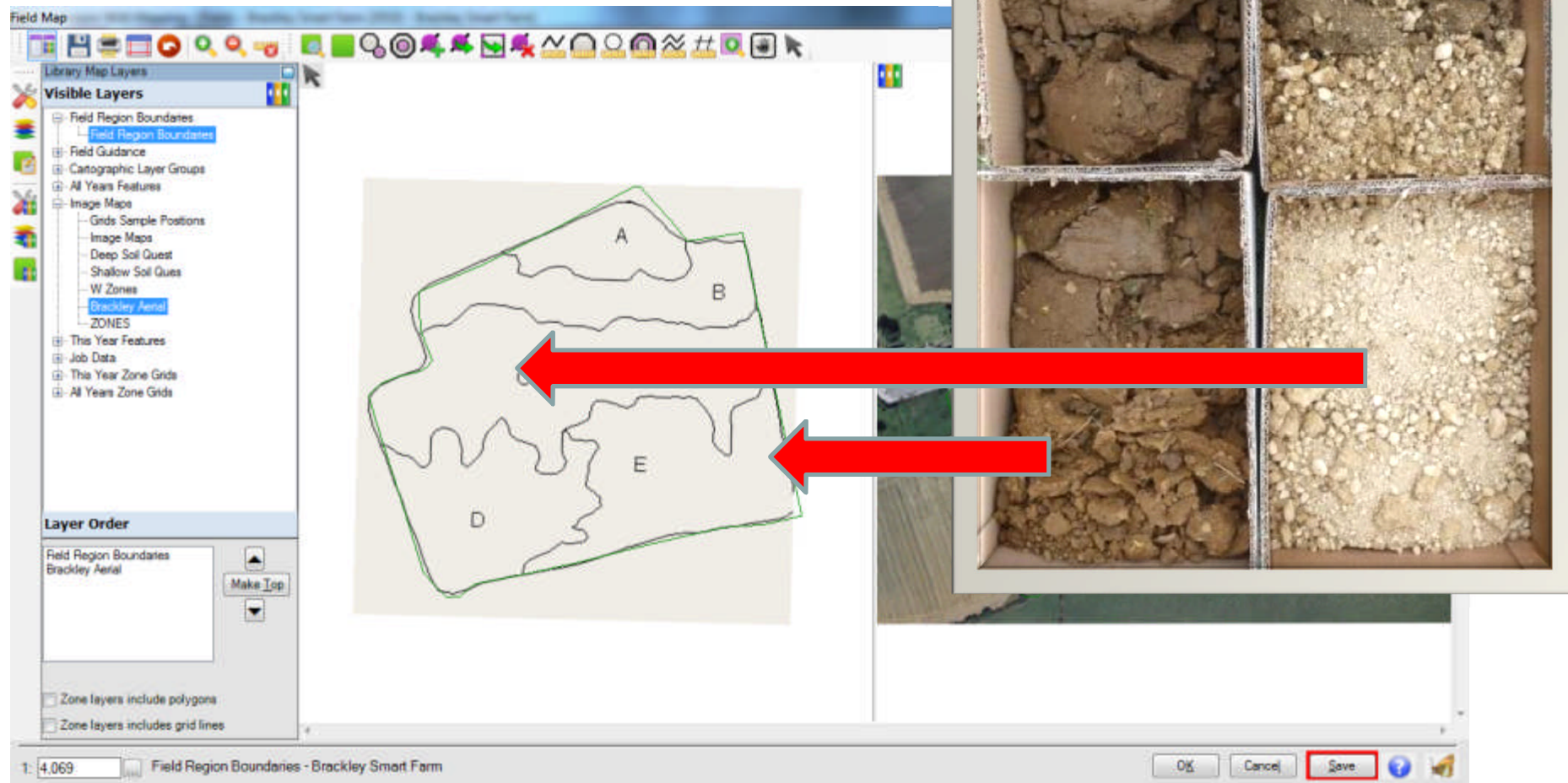


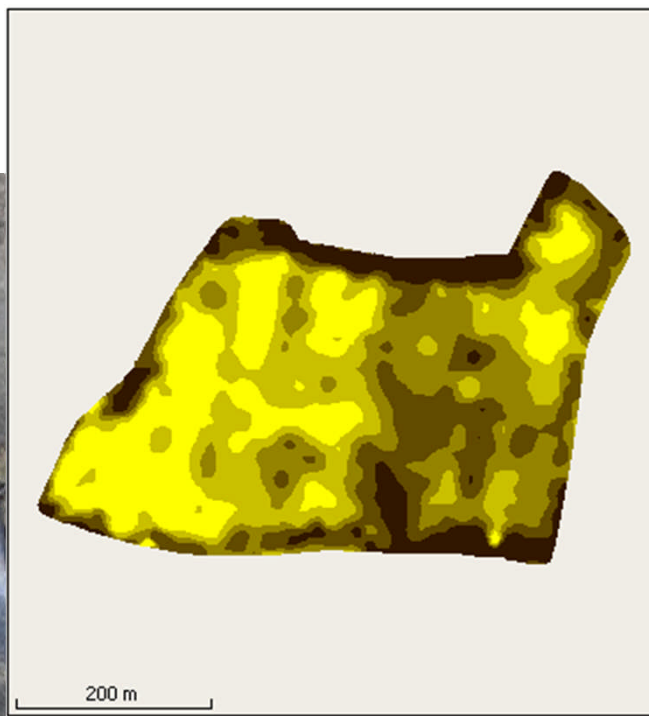
Conductivity



Collection of Fields at CPF

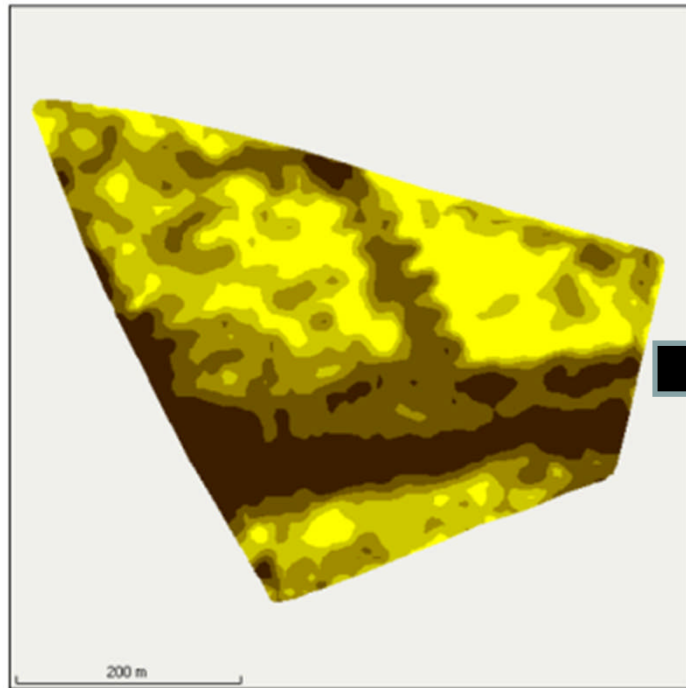




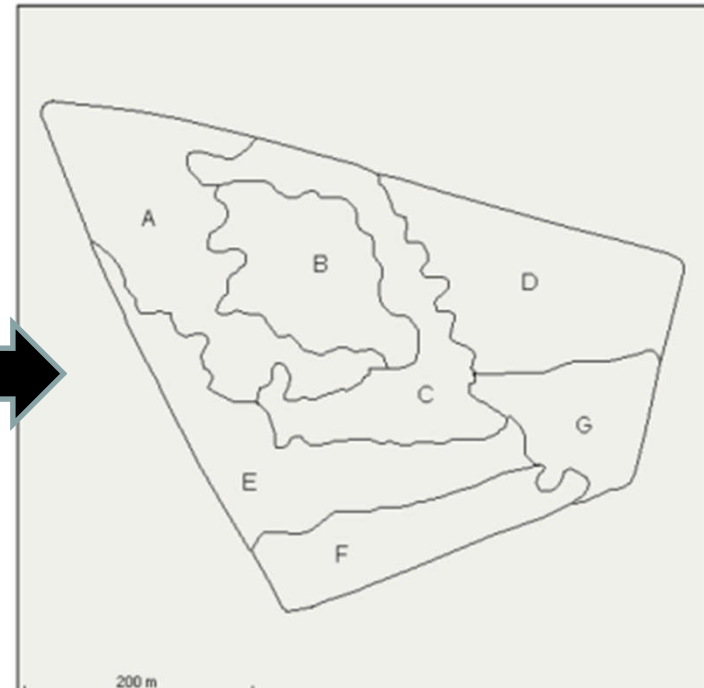


Soil Conductivity Map – Zone

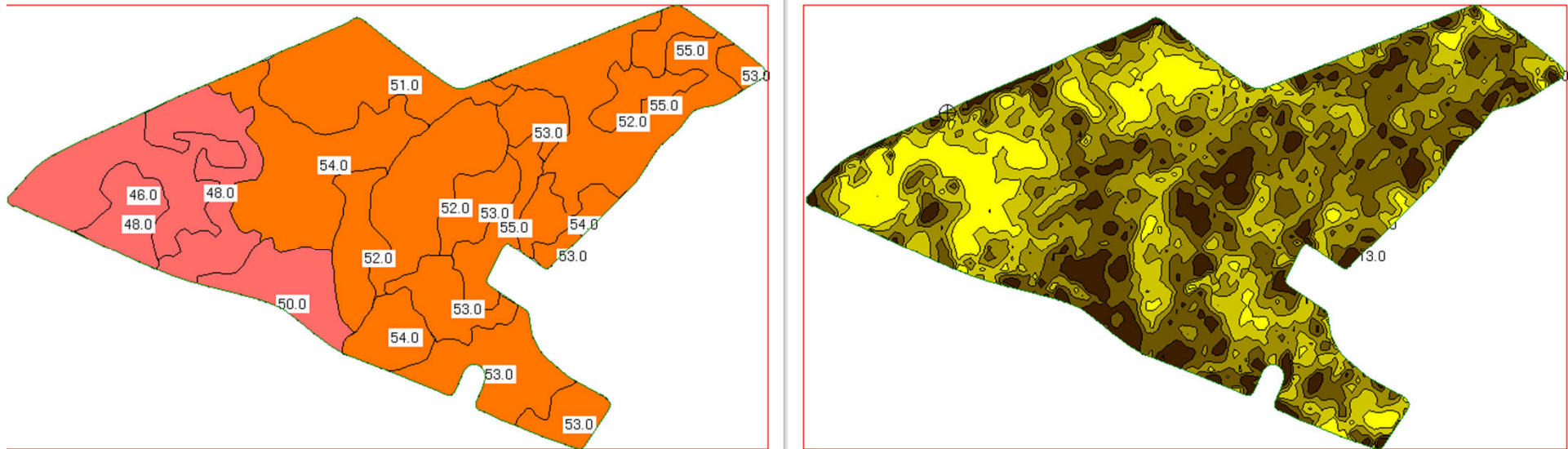
Shallow



Soil Sample Plan



Texture / Scan EC



Weeds

