



Beef Monitor

Precision Beef Finishing

Dr. Andrew R. Edwards

Sales and Marketing Director

David Ritchie (Implements) Ltd





Beef Monitor

- Innovate UK project
- What is Beef Monitor?
- Project so far
- Commercialisation
- Further into the future?





the perfect partner

Innovate UK





Goal

Prediction of carcass classification and meat yield
prior to cattle being sent to the abattoir



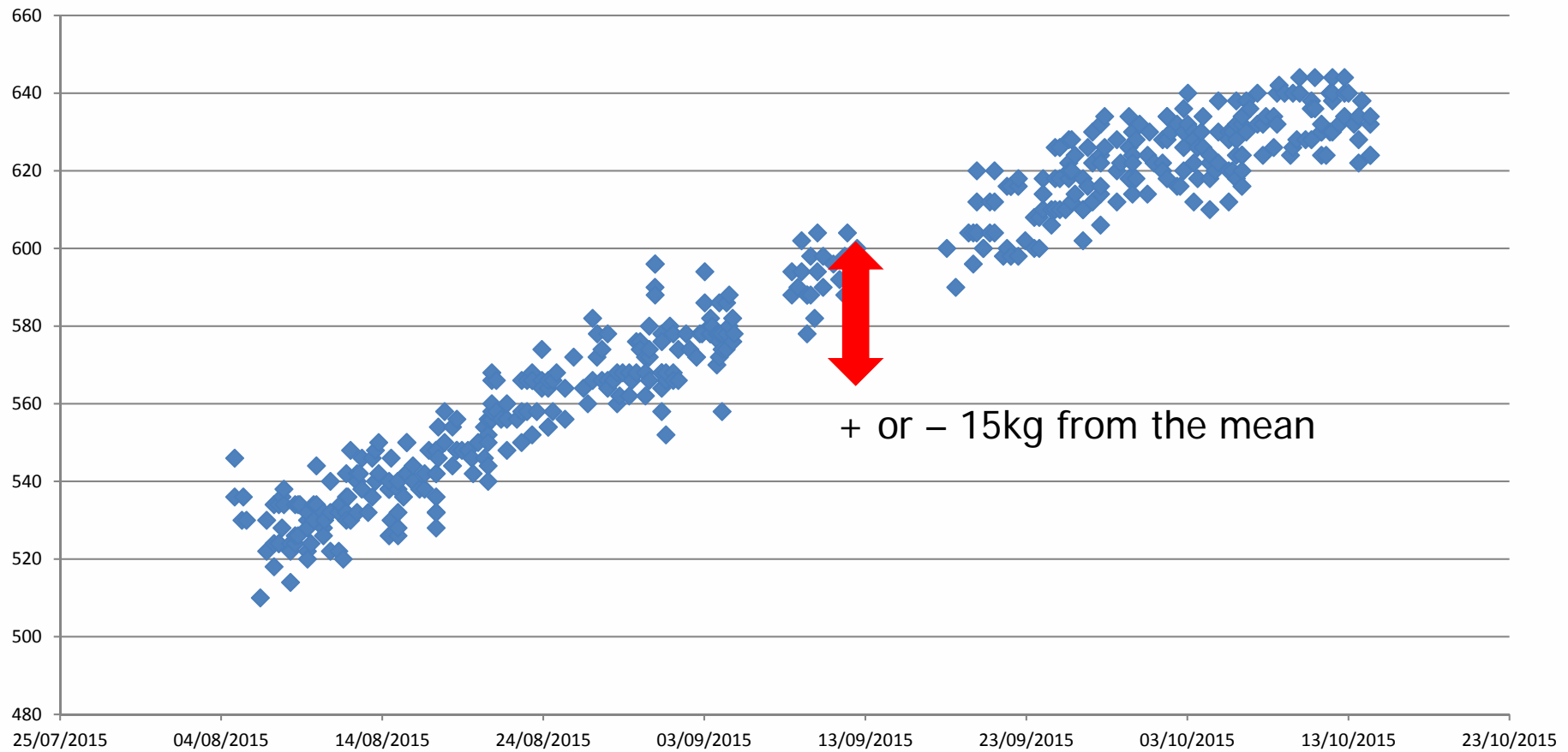


Early Prototypes



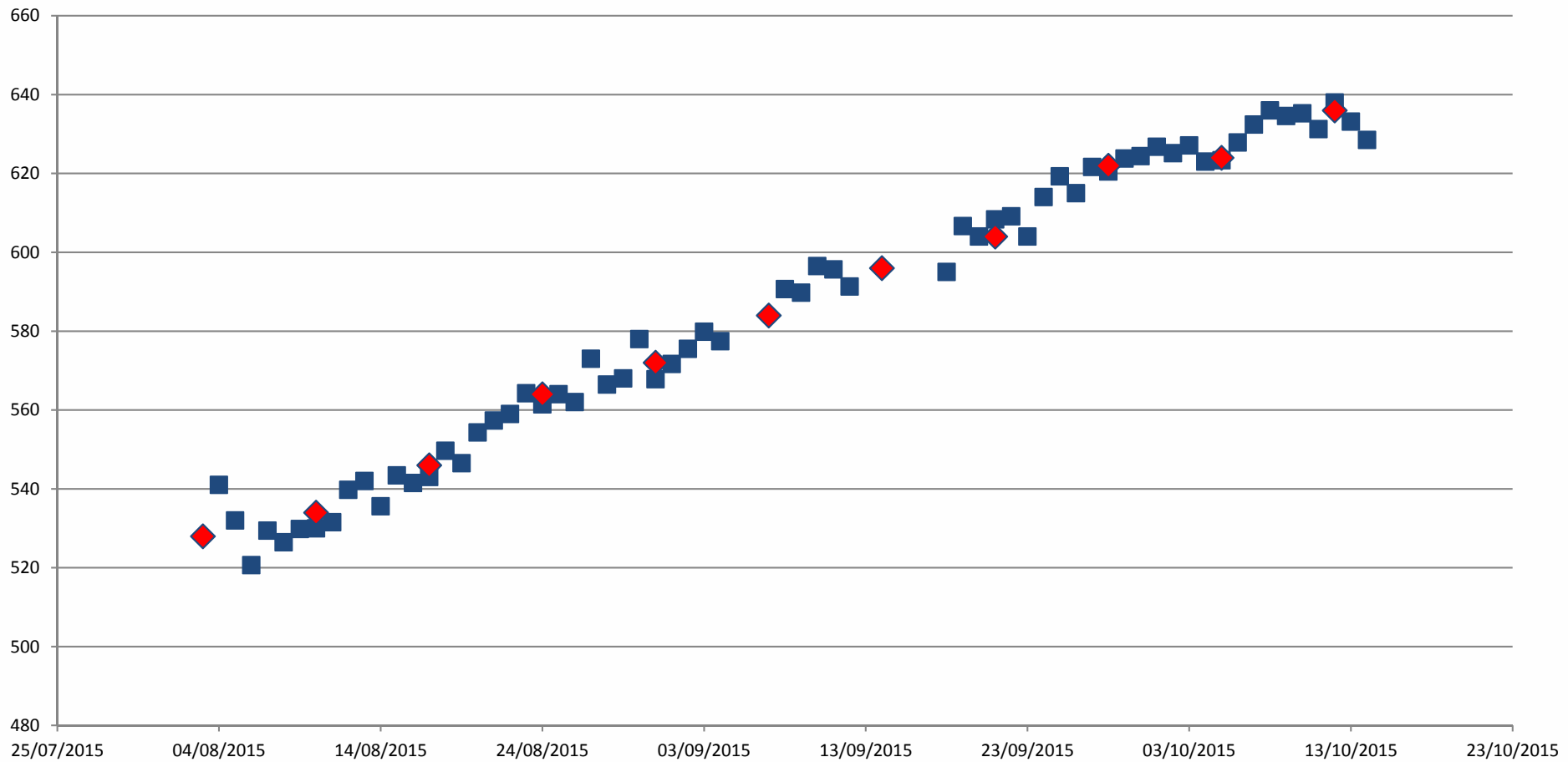


Single Beast Weights





Average Live Weight





Developments





Commercial Offering

- Weigh at the water trough
- One unit/50 beasts
- Linked remotely to App – data straight to phone!





Benefits

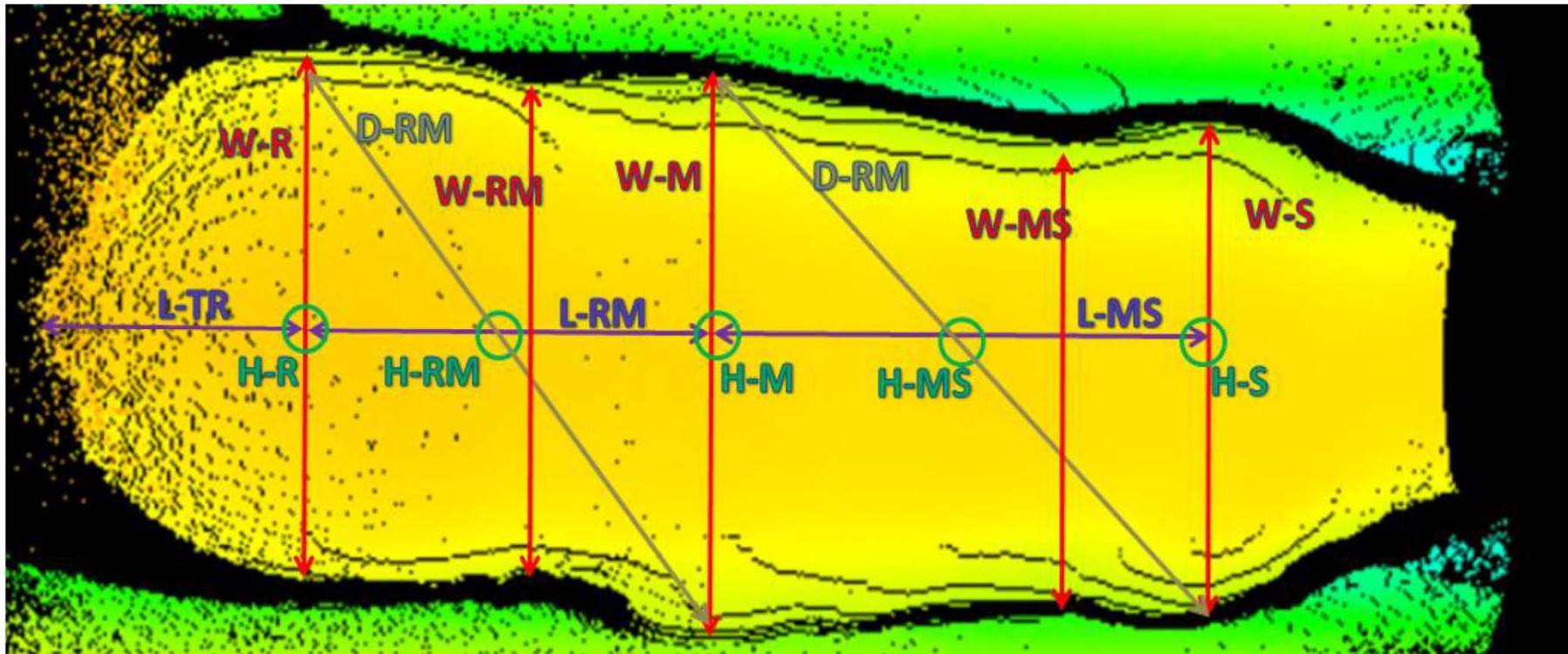
- Labour saving
- Improves efficiencies on farm
- Cattle sent to market at optimum weight
 - Reduced risk of over-weight penalties
 - Prevents keeping cattle too long





the perfect partner

3D camera technology





Abattoir Studies

- Run cattle under camera and over weigh platform
- Link data before and after slaughter to camera
- Excellent, early correlation to prove concept works





Current Status

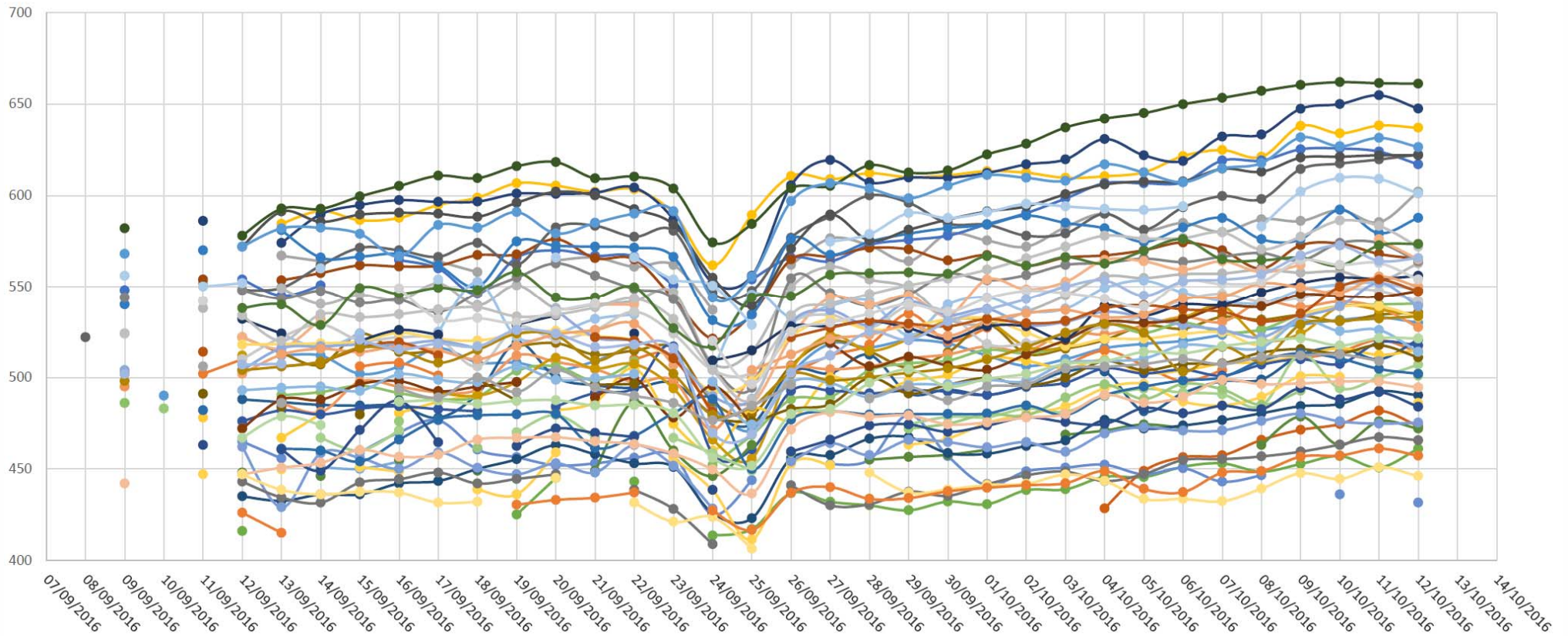
- Data collection
- Number of units out
- 3 with 3D camera
- Link to abattoir data
- Developing algorithms





Current Status

Average daily weights





Thank you

- Innovate UK for funding
- Project partners – SRUC, Morrisons, Scotbeef, Harbro, Innovent
- Team at Ritchie
- Organisers

