

**iagre.org**

**Agriculture ■ Forestry ■ Horticulture ■ Environment ■ Amenity**



Institution of Agricultural Engineers

**Professional Registration with the Engineering Council**

## **G2 – Guide to Professional Registration with the Engineering Council**

**Author:** Alastair Taylor

**Date:** June 2018

## At a Glance

- Read the guidance and information below
- Complete an IAgrE Application Form (even if you are already a member)
- Update your CV with detailed description of your work and experience
- Make sure you send a copy of your various qualification certificates
- Update and submit your CPD record
- Map your experience to the requirements of the UK Specification for Professional Engineering Competence (UK-SPEC)
- Submit all of the above to IAgrE along with the assessment fee.
- If in doubt, ring or email IAgrE for advice on.

## Professional Registration with Engineering Council

Registration for the three grades of Chartered Engineering (CEng), Incorporated Engineer (IEng) and Engineering Technician (EngTech) is in two stages: **INTERIM STAGE** - Successful completion of an approved academic course and **FINAL STAGE** - Completion of approved industrial training and experience

## Brief Overview of Process

**Please refer to the flow chart of page 4 which shows the process for becoming registered. This diagram refers specifically to Chartered Engineer (CEng) and Incorporated Engineer (IEng)**

**1. Carefully read through the UK Standard for Professional Engineering Competence (UK-SPEC)** which explains the education, experience and competences required of a Chartered or Incorporated Engineer. This can be obtained from **IAgrE** or other Professional Engineering Institutions (institution or institute that is licenced by the UK Engineering Council) or from the website [www.engc.org.uk](http://www.engc.org.uk)

*Whilst the UK-SPEC and supporting procedures are consistently applied across the Professional Engineering Institution community, the detailed arrangements and time scales for processing applications may vary across that community. IAgrE has prepared specific guidelines for its Members.*

**2a Experienced applicants** may submit their report at the same time as their application form.

Complete the application form provided by **IAgrE** and return it with the supporting report as described below. In most cases, your report will be your latest CV augmented by an appendix which describes how you meet the various standards set out in UK-SPEC.

**Your CV and supporting Appendix** will consist of a career review and should demonstrate how your work experience and career to date have led to a level of all-round professional competence. It should be written in the first person with:

- discussion of previous and present posts in chronological order

- demonstration of how the competencies have been achieved, breadth of knowledge has been developed and how you are engaged in the engineering discipline.
- evidence of academic qualification with details of any specific training courses attended.

**You will need to include** a review of relevant projects or specified activities demonstrating your competence. It should relate to actual work for which you have been personally responsible and can be taken from more than one project or activity. The report must be cross referenced against the achievement of the elements of competence in UK-SPEC. These competences are at the heart of the process and have been designed to measure vocational training, experience and awareness.

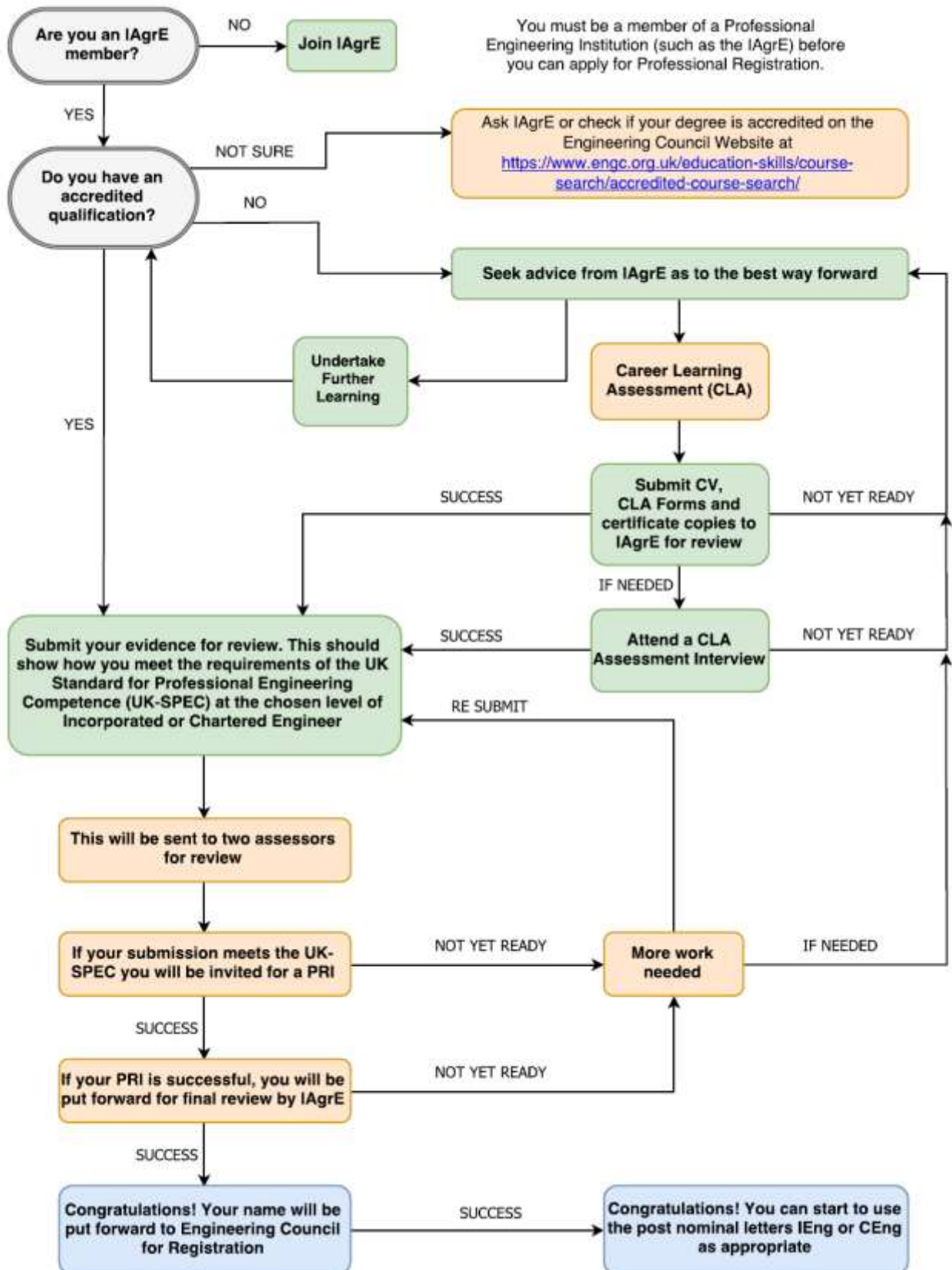
All applications should be validated by at least one mentor, sponsor or supervisor, who shall confirm that the report represents your own work.

**2b Inexperienced applicants** may be asked to submit an application form and CV to check that they have sufficient education and experience to progress with the application.

Complete the application form provided by **IAgrE** and return with the application fee. **IAgrE** will assess the application and will advise you how to proceed. If deemed suitable for progression to the next stage, you will be invited to submit your detailed CV and appendices as described in 2a above.

**4 The final stage of the assessment process is the 'Professional Review Interview' (PRI).** This will be a face to face interview and normally last for between 40 and 60 minutes. It may be conducted concurrently with an application to become a full voting, (corporate) member of **IAgrE**, but can equally be a stand-alone review. The PRI gives you the opportunity to further demonstrate under critical examination, knowledge and understanding, competence and engagement in the engineering discipline.

*You are advised to read the IEng/CEng Specification and associated guidance booklets which are available from IAgrE, before committing to either an application or your drafting of the report. For further information please contact IAgrE.*



## All about Chartered Engineers (CEng)

These are characterised by their ability to create and develop appropriate solutions and designs to engineering problems, using new or existing technologies, through innovation, creativity and change. They might develop and apply new technologies, promote advanced designs and design methods, introduce new and more efficient production techniques, marketing and construction concepts, pioneer new engineering services and management methods. Chartered Engineers are variously engaged in technical and commercial leadership and possess interpersonal skills. There are two routes to registration, the **Standard Route** for those with relevant exemplifying qualifications and the **Individual Route** for those without the exemplifying qualifications but with lengthy relevant experience.

**Standard Route** - An accredited 4-year MEng programme or 3-year BEng(Hons) degree supplemented by further approved learning in agricultural engineering or relevant branch of engineering, and having at least 2 years of post-degree industrial training and at least 2 years of responsible industrial experience in agricultural engineering. **Registration at the final Stage is subject to satisfactory Professional Review Interview.**

**Individual Route** – Applicants without these exemplifying qualifications can demonstrate the required knowledge and understanding in other ways, but must clearly demonstrate they have achieved the same level of knowledge and understanding as those with qualifications. These include:

- An assessment of learning and development gained through experience. This is called a Career Learning Assessment. **(This route is preferred by IAgrE)**
- Writing a Technical Report **(IAgrE refers to this as the TRO route)**
- Following assessed work-based learning programmes
- Taking academic programmes specified by the IAgrE

## All about Incorporated Engineers (IEng)

These are characterised by their ability to act as exponents of today's technology through creativity and innovation. To this end, they maintain and manage applications of current and developing technology, and may undertake engineering design, development, manufacture, construction and operation. Incorporated Engineers are variously engaged in technical and commercial management and possess effective interpersonal skills.

There are two routes to registration, the **Standard Route** for those with relevant exemplifying qualifications and the **Individual Route** for those without the exemplifying qualifications but with lengthy relevant experience.

**Standard Route** - An accredited 3-year Bachelor level degree or BTEC Higher National Diploma/Higher National Certificate supplemented by a 'matching section' equivalent to one further year of study, in agricultural engineering or relevant branch of engineering, and having at least 2 years of approved industrial training and at least 2 years of approved industrial experience in engineering or agricultural engineering. **Registration at the Final Stage is subject to satisfactory Professional Review Interview.**

**Individual Route** – Applicants without these exemplifying qualifications can demonstrate the required knowledge and understanding in other ways, but must clearly demonstrate they have achieved the same level of knowledge and understanding as those with qualifications. These include:

- An assessment of learning and development gained through experience. This is called a Career Learning Assessment. **(This route is preferred by IAgrE)**
- Writing a Technical Report **(IAgrE refers to this as the TRO route)**

- Following assessed work-based learning programmes
- Taking academic programmes specified by the IAgrE

## All about Engineering Technicians (EngTech)

These are involved in applying proven techniques and procedures to the solution of practical engineering problems. They carry supervisory or technical responsibility, and are competent to exercise creative aptitudes and skills within defined fields of technology. Professional Engineering Technicians contribute to the design, development, manufacture, commissioning, operation or maintenance of products, equipment, processes or services. Professional Engineering Technicians are required to apply safe systems of work.

In order to gain the competencies necessary for EngTech registration, a period of training and experience must have been undertaken. Formal, supervised training such as is provided by some engineering based apprenticeships leading to a Level 3 qualification can provide most, if not all, of the training and experience necessary. IAgrE recognises that some apprenticeships will lead directly to Professional EngTech registration. Please contact IAgrE for details of these. There are two routes to registration at EngTech

**Standard Route** – Candidates who hold the following qualifications in land based/agricultural engineering or relevant branch of engineering:

- National Diploma or National Certificate
- Foundation Degree
- Approved level 6 qualification in Scottish Qualifications and Credit Framework
- City & Guilds Higher Professional Diploma
- Technical Certificate as part of an Approved AMA Programme
- Level 3 NVQ or SVQ
- Work based learning route approved by the IAgrE
- Similar qualifications providing they have been assessed and approved by the IAgrE

**Individual Route** – Candidates without exemplifying qualifications may apply for an individual appraisal. This is a separate procedure administered by the Institution and involves an in-depth appraisal of the knowledge and experience acquired.

Experienced, practising professional Engineering Technicians often have gained the necessary knowledge and skills through working closely with other skilled colleagues over a number of years. For further details about this route, contact the IAgrE Membership Secretary.